

# Monitoraggio popolazione di camoscio nel Parco Orsiera Rocciavrè

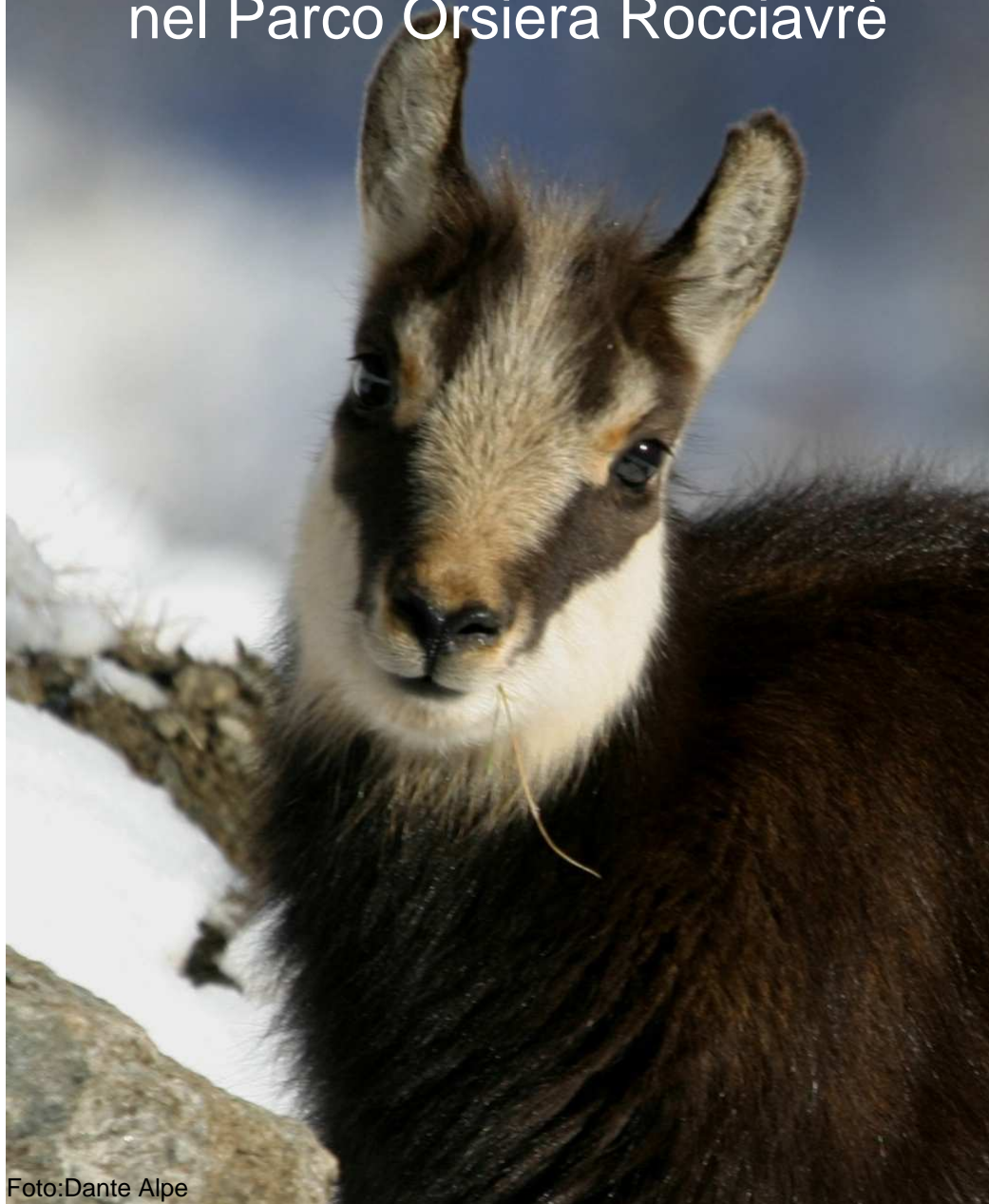
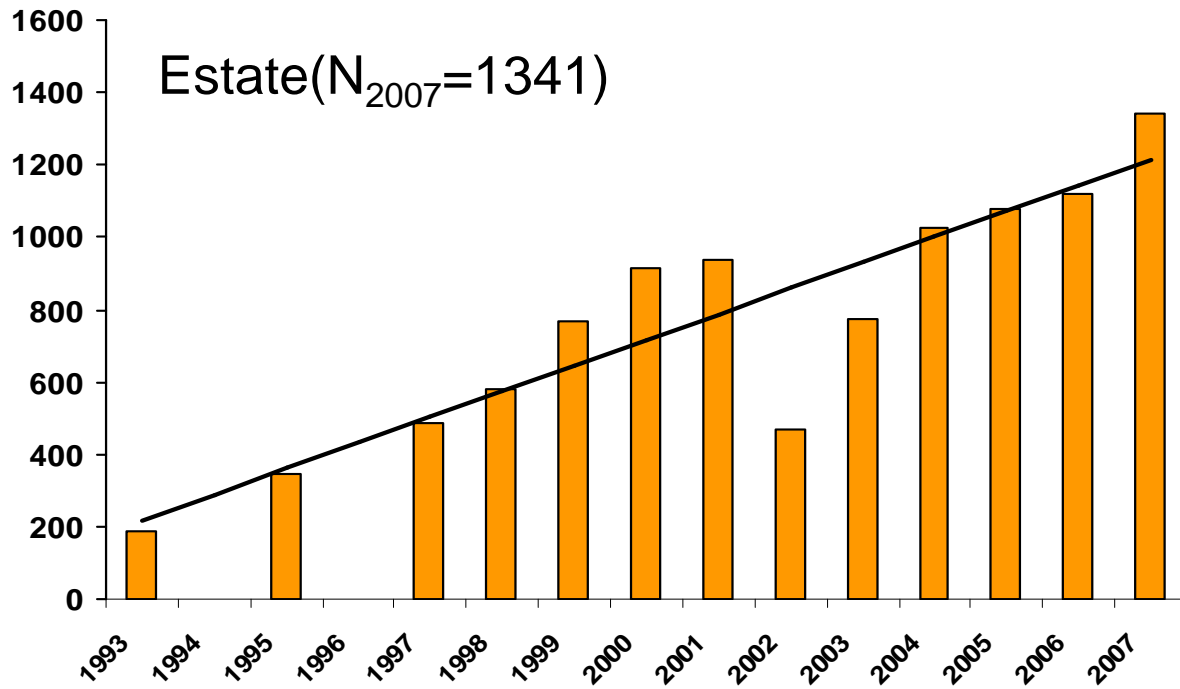


Foto:Dante Alpe

-Ramona Viterbi,  
-Corpo di sorveglianza Orsiera Rocciavrè

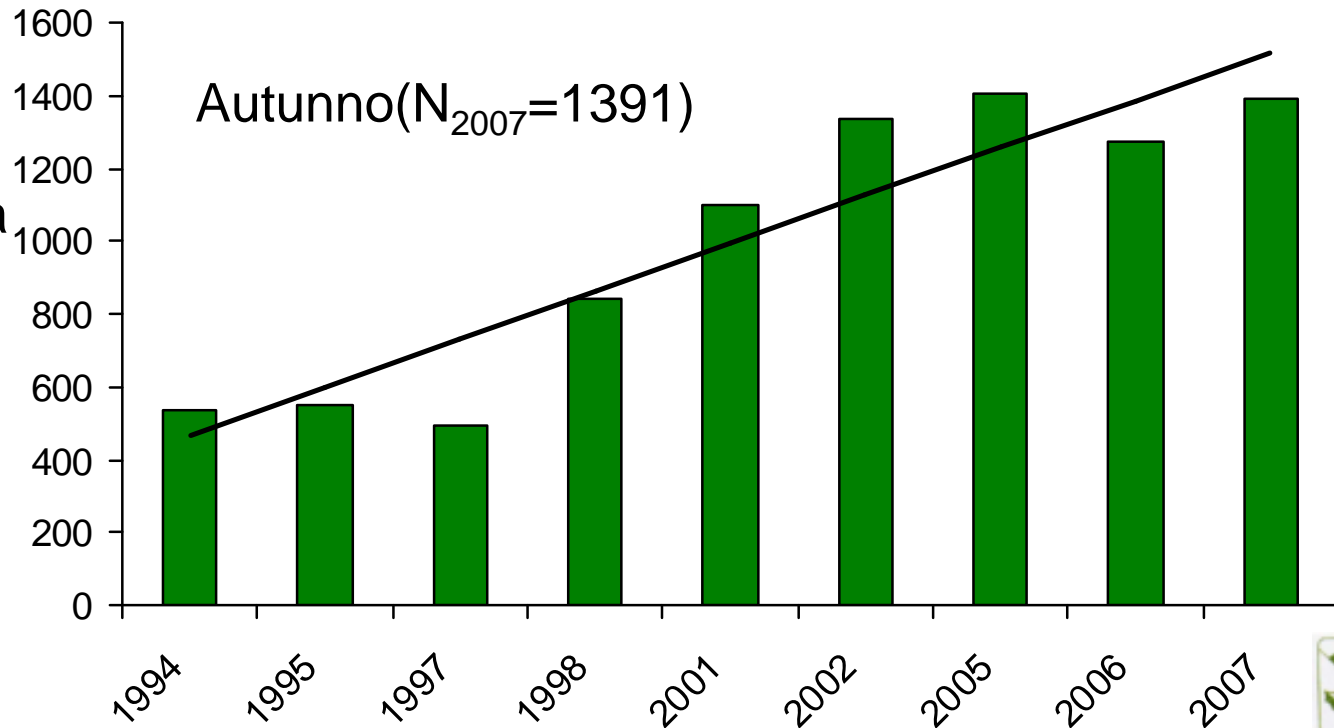




Superficie censita=7800 ha

Densità 2007 =17 /100 ha

Censimenti iniziati nel 1987 in maniera più continuativa dal 1993



	<b>N/100 ha estate</b>	<b>N/100 ha autunno</b>
<b>1997</b>	6.23	6.37
<b>1998</b>	7.44	10.76
<b>1999</b>	9.84	
<b>2000</b>	11.76	
<b>2001</b>	12.05	14.08
<b>2002</b>	6.03	17.14
<b>2003</b>	9.96	
<b>2004</b>	13.21	
<b>2005</b>	13.85	18.05
<b>2006</b>	14.36	16.35
<b>2007</b>	17.23	17.83

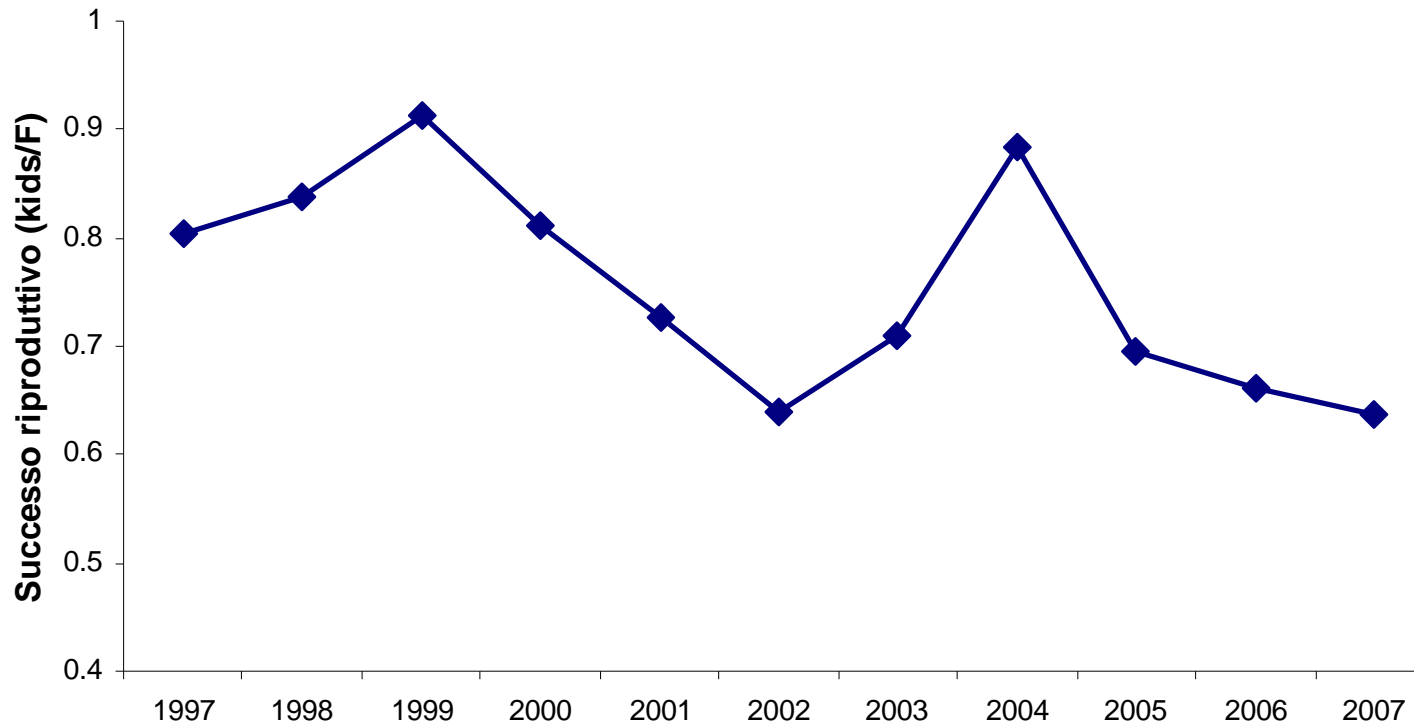
Densità



	<b>J/AD estate</b>	<b>J/AD autunno</b>
<b>1997</b>	0.47	0.50
<b>1998</b>	0.75	0.50
<b>1999</b>	0.61	
<b>2000</b>	0.55	
<b>2001</b>	0.69	0.65
<b>2002</b>	0.38	0.46
<b>2003</b>	0.49	
<b>2004</b>	0.57	
<b>2005</b>	0.52	0.68
<b>2006</b>	0.56	0.43
<b>2007</b>	0.56	0.42

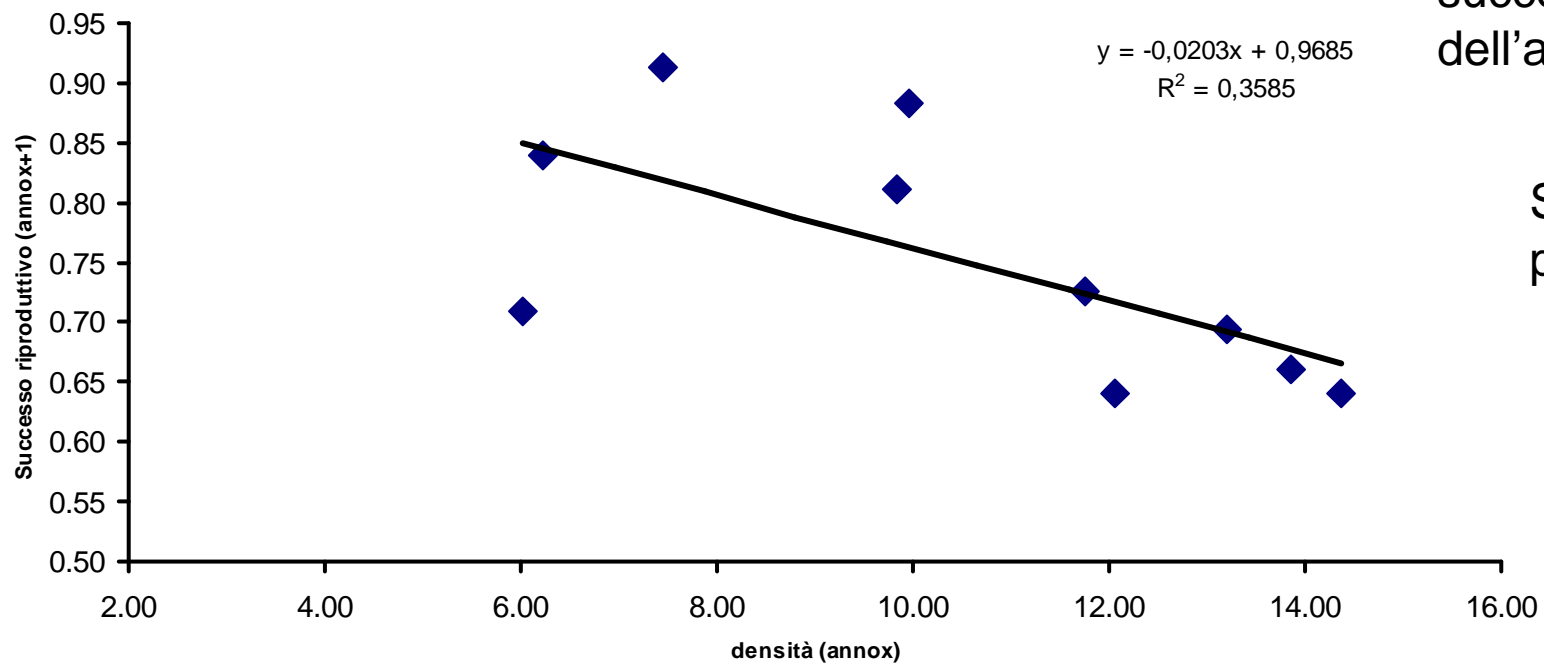
Rapporto giovani/adulti



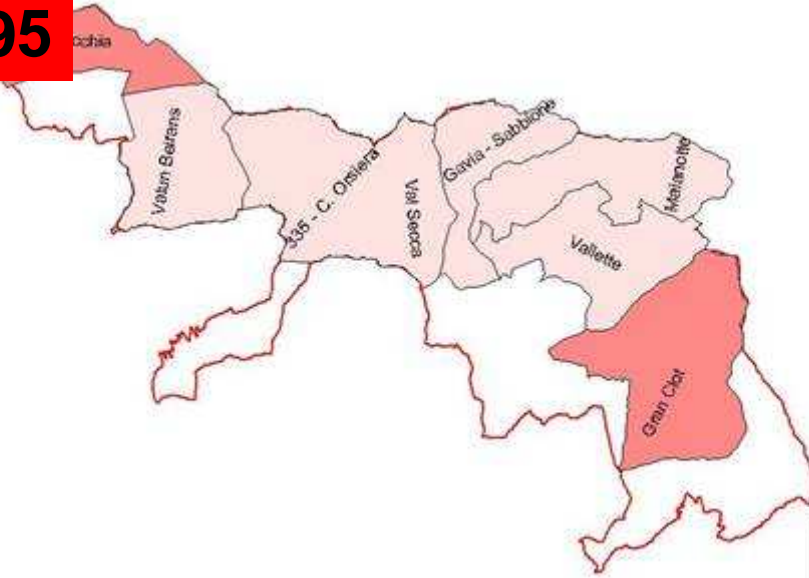


La densità di un anno sembra influenzare il successo riproduttivo dell'anno successivo

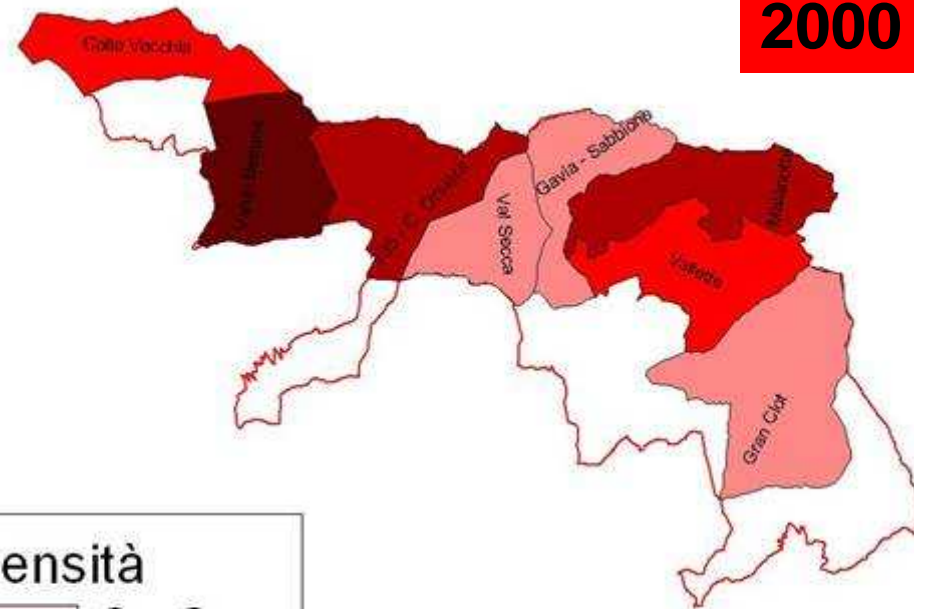
Spearman=-0.70  
p=0.02



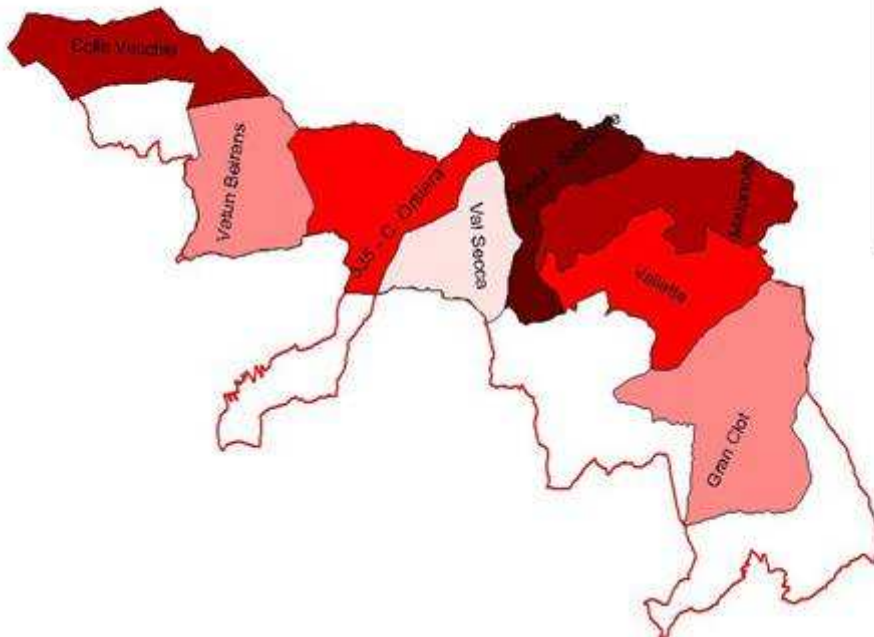
1995



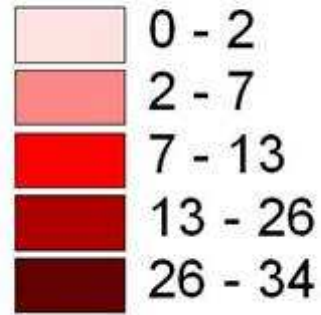
2000



2005



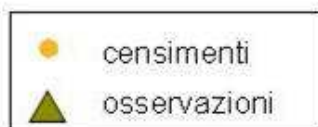
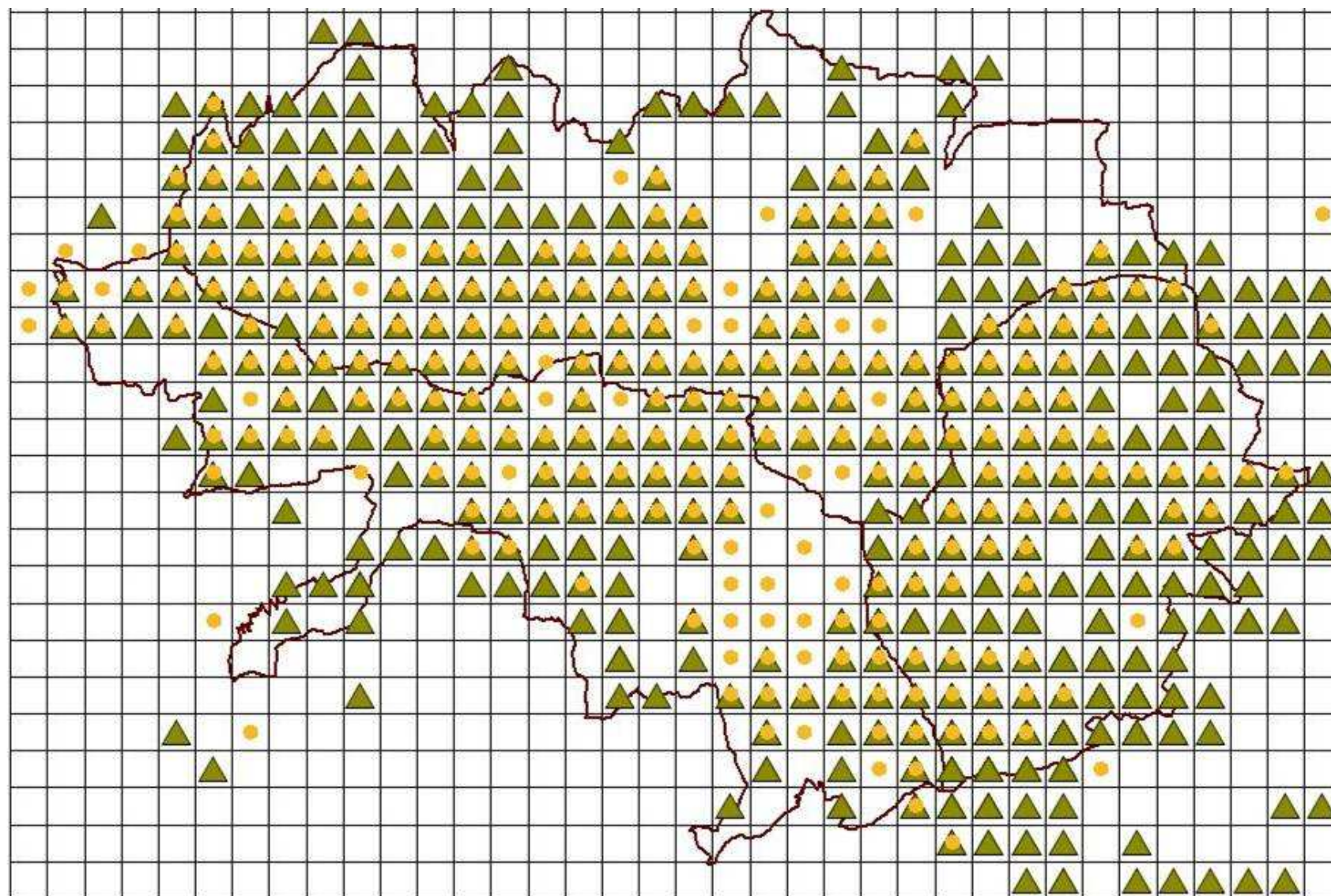
Densità



Esempio Val  
Chisone:  
Aree di censimento  
e variazioni della  
densità  
(anni 1995-2000-2005)



# Distribuzione annuale camoscio (censimenti+osservazioni)

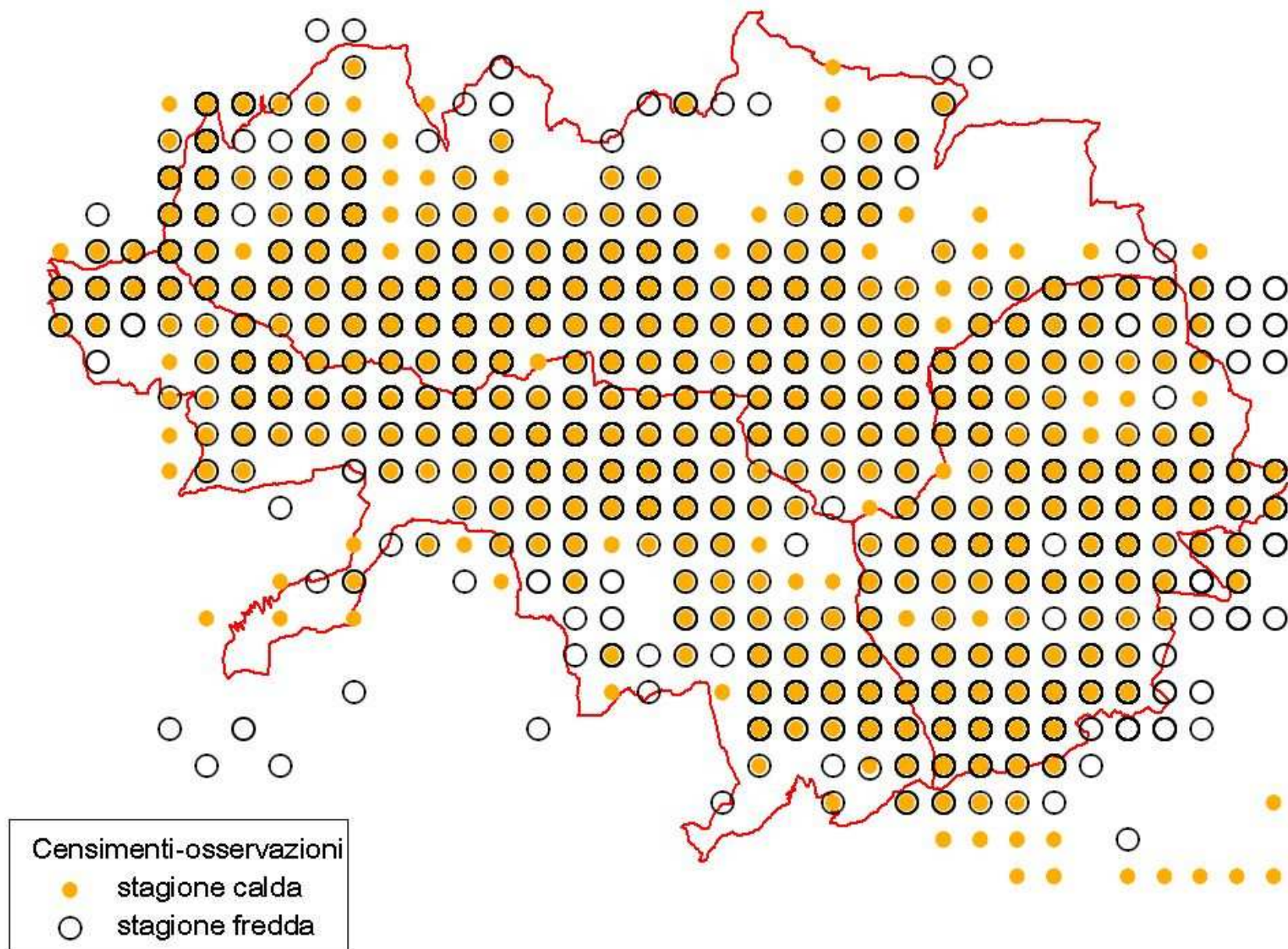


Anni 2003-2007

1:75.000



# Distribuzione stagionale camoscio (censimenti+osservazioni)



Anni 2003-2007

